

**York NeuroImaging Centre**  
THE UNIVERSITY *of York*

**YNiC Induction**

# Overview

- Introduction to YNiC
- Safety
- Induction Pack Handout
- Centre Tour

# YNiC Facilities

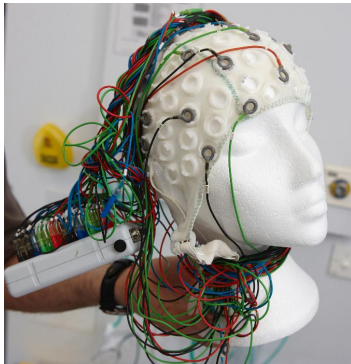
- GE 3.0T MRI



- Siemens 3.0T MRI



- 4D MEG / EEG



- Magstim TMS / Brainsight navigation system



- Open Plan Analysis Area

# YNiC Staff

- Director:  
Tony Morland



- Deputy Director:  
Alex Wade



- Lecturer:  
Mark Hymers



- Andre Gouws



# YNiC Staff

- Radiographer:  
Naveed Mughal
- System Administrator:  
Joe Lyons
- Research Assistant:  
David Coggan
- Receptionist:  
Jackie Mayhew
- Research Assistant:  
Martin Scott
- Research Assistant:  
Becky Lowndes



# Help and Support

- Documentation:
  - Website: <https://www.ynic.york.ac.uk>
  - Wiki: <https://www.ynic.york.ac.uk/docs>
  - Guides: <https://www.ynic.york.ac.uk/guides>  
These are being gradually incorporated into the wiki
- ynic-users mailing list
  - Please sign up for this at:  
<https://www.ynic.york.ac.uk/mailman/listinfo/ynic-users>
- YNiC Staff
- Finally, support can be obtained from the Director or Deputy Director

# In an Emergency...

- There are a range of alarms which may sound at YNiC. For students, the most important alarms are:
  - Fire alarm: In this case, use the nearest fire exit and proceed to the meeting point in the Biocentre car park
  - The fire alarm is tested every Tuesday afternoon – be aware of this! You only need to evacuate if the alarm remains on for more than 30 seconds.
- Other centre alarms include:
  - Panic alarm, MRI equipment room alarm (blue light near open plan door), low oxygen alarms, helium flow alarms.
  - If you hear an alarm in an area (other than open plan), leave and alert a member of YNiC staff
- In any other emergency, contact a member of YNiC Staff:
  - If you're in MRI or MEG, panic alarms are present on the walls (look for the red buttons)

# General Safety

- You should never find yourself working alone in MEG, MRI or Chemistry.
- You can always get out of an area either using the green EXIT button or the fob attached to the door for this purpose – these fobs must not be removed
- In the evenings, you must exit YNiC via the main entrance, not the Biocentre as it is possible to become trapped in the Biocentre foyer if you do not have keys...



# MEG Safety

- Although MEG does not use a large static field, it possess its own hazards
- The MEG area contains large amounts of liquid cryogenes, such as Helium
- 1 litre of liquid Helium creates over 800 litres of gas
- If you see a white cloud in MEG or any other area, **do not enter** – report this to a member of YNiC staff immediately

# MRI Safety

- The 3T magnet is **always on**
- You must not enter the magnet room unless cleared to by the MRI operator
- Full consent and safety forms must be completed by ***anybody*** entering the magnet room
- You must watch the MRI safety video, once, before going into MRI...

# Anomalies Policy

- The YNiC Clinical Diagnostic (Anomalies) policy can be found on this page:  
<https://www.ynic.york.ac.uk/information/policies>
- The important points are:
  - Participants at YNiC must agree to their GP being contacted in the event of an anomaly
  - If an anomaly is found, the investigator and the participant will be informed and the scan will be reported by an independent radiologist
  - The results will be sent to the GP
  - Data from the scan will not be released to the investigators unless the participant signs a release form

# Anomalies Policy

## Professional behaviour

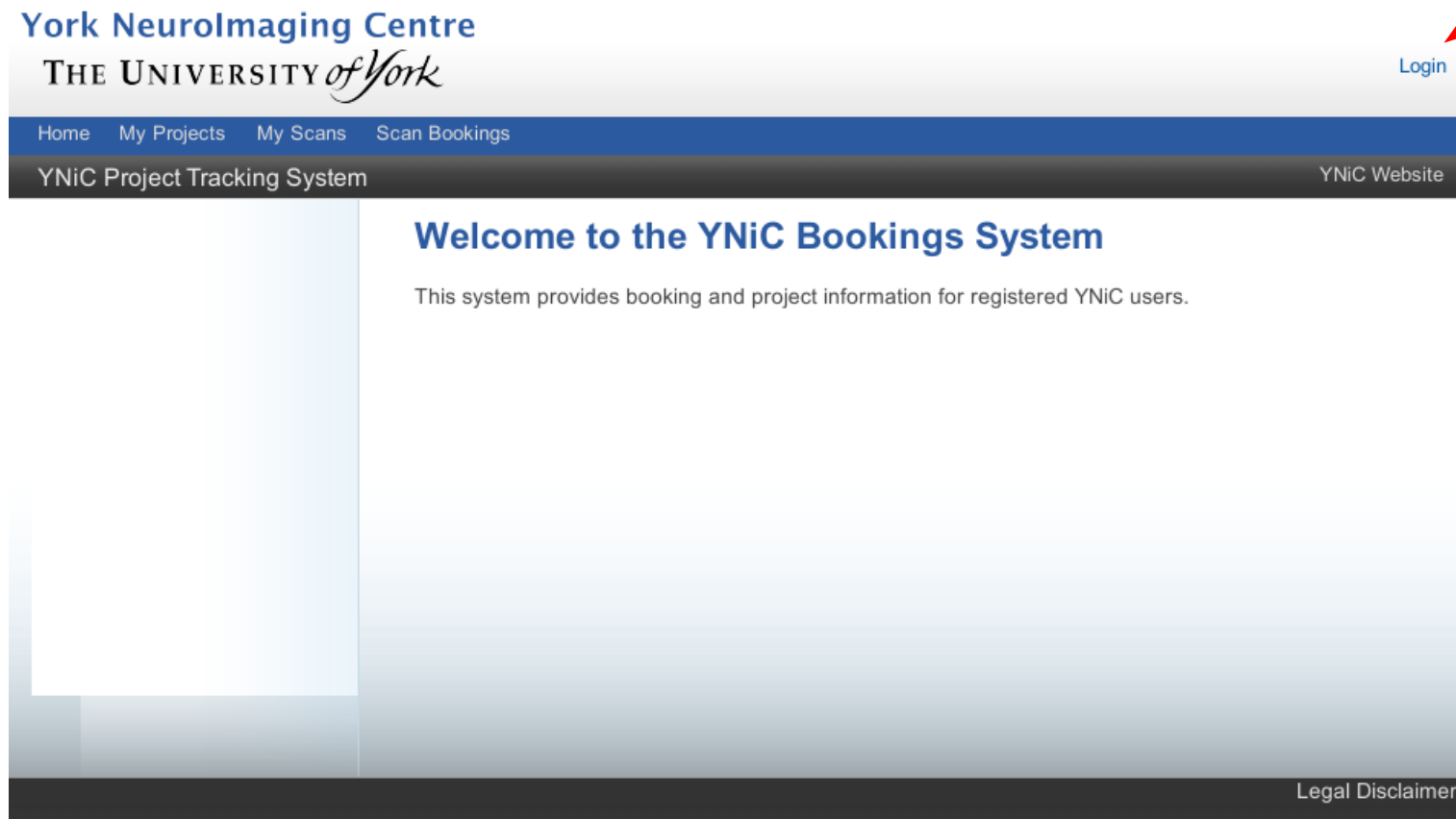
- It is important that you are aware of the following:
  - You may see someone being scanned when an anomaly is detected;
  - None of us are medical professionals and we do not make judgements on anomalies;
  - If this happens we continue the scan session in a professional manner;
  - **We do not discuss what we have seen with *anyone*, including the person being scanned. They will be notified via the official, professional clinical reporting route.**

# Applying to run a project

- Three stages:
  - Project proposal
  - Project presentation
  - Research Governance / Ethics Application
- These must be completed in order
- Forms and guidance are available at:
  - <https://www.ynic.york.ac.uk/forms/>

# Project Tracking System

- Used to make bookings, track your time usage etc
  - <https://www.ynic.york.ac.uk/pts>



# Project List

## My Projects

- P1015
- P1025
- P1026
- P1030
- P1039
- P1057
- P1072
- P1096
- P1108
- P1120
- P1121
- P1152
- P1153
- P1160
- P1162
- P1165
- P1168
- P1175
- P1181
- P1187
- P1198
- P1210
- P1217
- P1218

Project ID	Name	Status	Ethics Expiry	People	Charge
<a href="#">P1015</a>	Hyperpolarisation	Scanning	2013-12-31	PI/PC: Gary Green SLO: Sam Johnson	MRI: £61.00
<a href="#">P1025</a>	Glaucoma fMRI Study	Analysis	2010-10-30	PI/PC: Antony Morland SLO: Andre Gouws	MRI: £0.00
<a href="#">P1026</a>	Retinal Lesions Cortical Topography	Analysis	2015-12-31	PI/PC: Antony Morland SLO: Andre Gouws	MRI: £270.00
<a href="#">P1030</a>	Neural basis of POSNARC	Analysis	2007-06-28	PI/PC: Silke Goebel SLO: Mark Hymers	MRI: Not Set
<a href="#">P1039</a>	Magnitude and distance effects in number comparison	Analysis	2007-08-17	PI/PC: Silke Goebel SLO: Mark Hymers	MEG: Not Set
<a href="#">P1057</a>	Trial by trial variation	Analysis	2009-08-01	PI/PC: Michael Simpson SLO: Michael Simpson	MEG: £0.00 MRI: £0.00
<a href="#">P1072</a>	MEG correlates of auditory stimulus context	Analysis	2011-10-01	PI/PC: Rebecca Millman SLO: Rebecca Millman	MEG: £0.00 MRI: £0.00

<< March 2015 >>

S	M	T	W	T	F	S
1	2	3	4	5	6	7
8	9	10	11	12	13	14
15	16	17	18	19	20	21
22	23	24	25	26	27	28
29	30	31				

View Period: Daytime

Choose your project

Project:  
P1268

Is activity in the lesion projection  
azone a result of normal  
feedback? What happens to the  
visual cortex in macular  
degeneration?

MRI / MEG / TMS

Machine:  
GE 3T SIGNA-HDX

Start and end

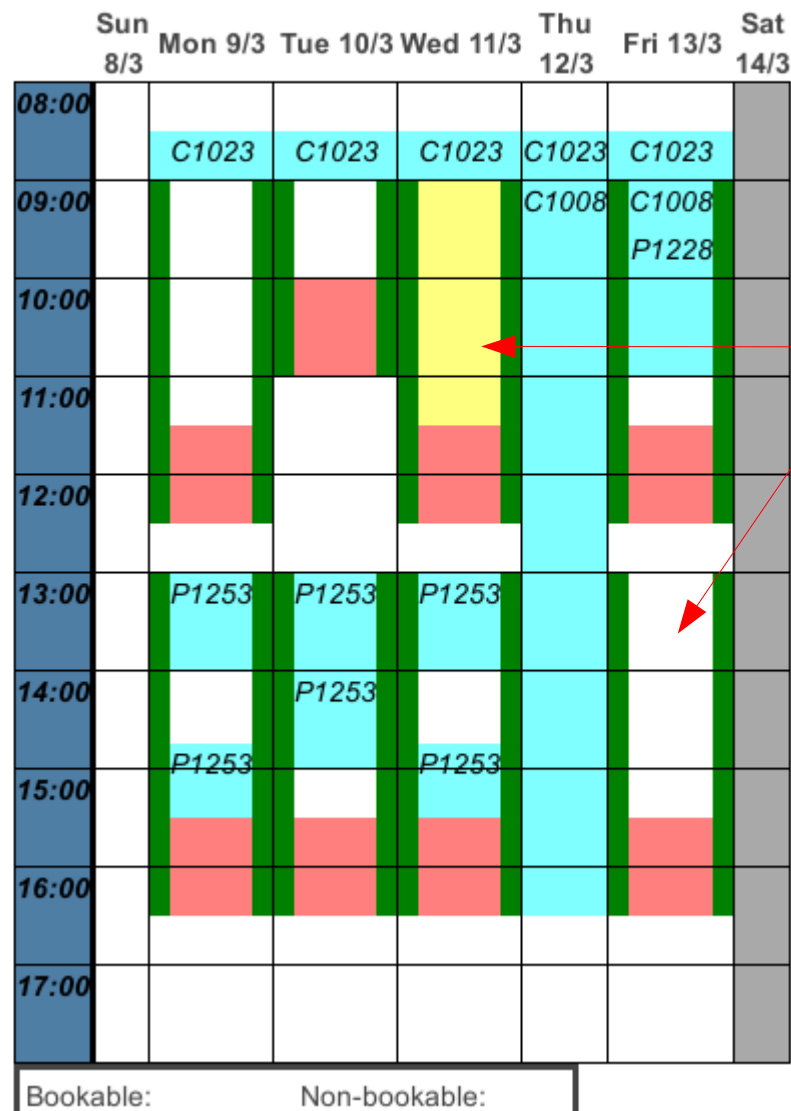
Start Time:  
2015-03-09 09 : 00

End Time:  
2015-03-09 10 : 00

Operator:  
YNiC Operator

Make Booking Refresh

Make booking



Available times



# Adding participants to a booking

- Once you have made a booking and know the participant who will be scanned, you must tell YNiC this
- Done in the web interface
  - Click on the booking (see next slide)
- This will make sure that YNiC consent and safety forms are ready for you on the day

## Booking Details

Date: 2015-03-11 09:00 - 10:00

Project: P1268: Is activity in the lesion projection azone a result of normal feedback?  
What happens to the visual cortex in macular degeneration?

Machine: GE 3T SIGNA-HDX

Time (Original / Adjusted): 01:00

Operator: YNiC

Cost: £360.00

Invoiced: False

Booked by and for: mark

## Planned Participants

No participants added

Add Participants

Remove Participants

### Add Participants



Multiple numbers can be entered comma seperated

R1000

Find

R1000: Hymers

Cancel

OK

## Booking Details

Date: 2015-03-11 09:00 - 10:00

Project: P1268: Is activity in the lesion projection azone a result of normal feedback?  
What happens to the visual cortex in macular degeneration?

Machine: GE 3T SIGNA-HDX

Time (Original / Adjusted): 01:00

Operator: YNiC

Cost: £360.00

Invoiced: False

Booked by and for: mark

## Planned Participants

R1000: Hymers

Add Participants

Remove Participants

# Participant Registration

- Must be complete at least 24 hours before the scan
- Forms can be found at:
  - <https://www.ynic.york.ac.uk/forms>
- Participants **must** agree to their GP being contacted in the event of an anomaly or they will not be scanned
- Participants will be given an **R** number. You can obtain this from reception.

# Induction Packs

- Your pack should contain:
  - Account Form (with your temporary password)
  - Access Fob (£10 deposit)
  - Participant Registration Form
  - Guides
    - Induction Guide
    - Data Protection Policy
    - Safety Guide
- You must ensure that you change your password the first time you log on
- We will now take a tour of the centre and answer any questions