

MRI Project Description Sheet

Scanner Protocol Name/Location site/head/H_____

Approved Persons: _____

Software				
Presentation	PsychoPy	E-Prime		

Hardware				
8 Channel Coil	16 Channel Coil	Projector	Auditory Delivery	Eye tracker

Computer				
Stim PC 1	Stim PC 2	User Laptop		

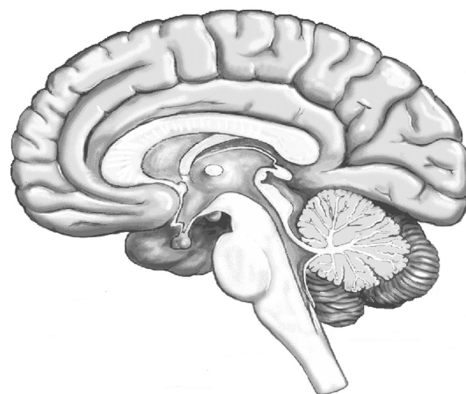
Response Devices				Other (specify)
Button Box Rt (Red Green)	Button Box Lt (Blue Yellow)	Optical Mouse	Call Button	

Physiological	(<i>phys_record_flag</i> = 1)			
Peripheral pulse	Respiratory	ECG		

Experiment start				
Scanner triggered	Dual Manual (3..2..1)	Software triggered		

Data Storage				
YNiC Server	other			

Notes: Please include coverage required and angulation.



see over for Run Sheet and timings

Protocol list and timings

This sheet is to be completed during pilot scanning in conjunction with the MR operator to ensure the scan timings are representative of the proposed project.

Project ID		
Sequence	Posted time (A)	Time required = A + ~2mins
Participant setup (safety Q, ear plugs, positioning etc)		5 mins
Extended setup?		10 mins
Loc	30sec	1 mins
Asset Cal	12 secs	1 mins
Pulse Check	6 secs	1 mins
T1 Flair	3.5 mins	4 mins
T1a	5 mins	6 mins
Fmri Run 1		
Fmri Run 2		
Fmri Run 3		
Fmri Run 4		
Fmri Run 5		
Fmri Run 6		
Fmri Run 7		
Fmri Run 8		
Participant exit		3 mins
Total Time (Prev T1a)		
Total Time (T1a req'd)		

These timings assume that prior to entering the scan control room the participant has:

1. Has had the experiment explained to them
2. Signed all consents and safety documentation
3. Removed make-up and Jewellery
4. Removed clothing with metallic elements e.g. unerwired bra, zippered tops etc.

Scan bookings can only be made in 15 minute increments. Bookings must be made using the timings from column 3 above and rounded up to the next 15 minute increment.

No assumptions regarding time savings due to booking multiple participants should be made without discussing fully with the MR operator responsible for your scanning session.